

SB52 & SB52GY Broadcast Spreader

Retain for future reference **TIP:** Many of these hardware parts can be purchased at your local hardware store.

9/05



CUSTOMER SUPPORT

At Precision Products Inc. delivering quality, value and outstanding service is our goal. However, sometimes parts do become damaged or lost during transport from our facilities to the store. **If you have any problems, please do not return this merchandise to the store. Call us and we will take care of any problem you may have with this unit.** When ordering replacement parts, please have the model number, part description, and part number.

Customer Support: (800) 225-5891 Ex. 204

General Office Number: (217) 735-1590

General Fax Number: (217) 735-2435

Mail: **Precision Products Inc.**

Parts Division

316 Limit Street

Lincoln, IL 62656

Visit us on the web at www.precisionprodinc.com

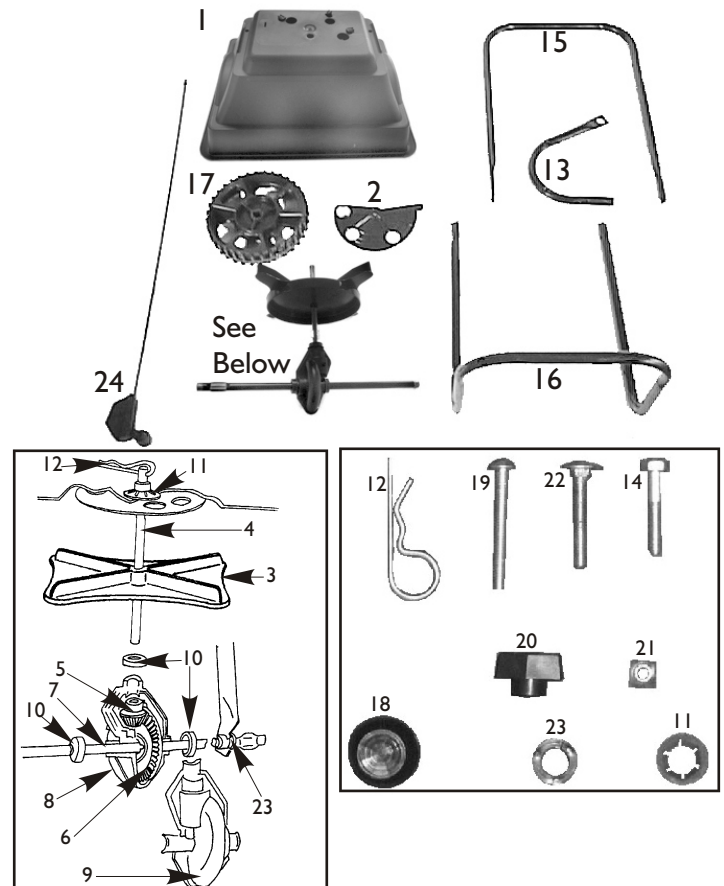
LIMITED WARRANTY

This unit is warranted against defects in materials and workmanship to the original purchaser, under normal use and service, for a period of ninety (90) days from date of sale. During the Warranty Period, we will repair or replace at our option free of charge to the original purchaser, any part of the Unit that our examination shows to be defective in workmanship or materials. This Warranty **Does Not** apply to damage caused by misuse, abuse, neglect, normal wear, or alterations by unauthorized persons.

PARTS LIST

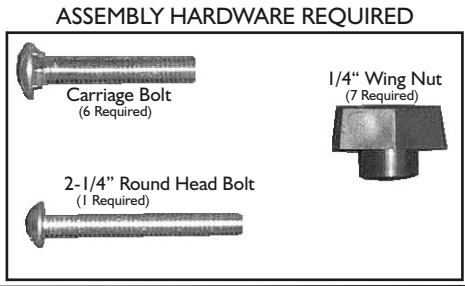
REF#	PART DESCRIPTION	PART #	QTY.
01	Hopper	2672	1
02	Slide Plate	1307	1
03	Spinner Disc	2614	1
04	Spinner Shaft	1004	1
05	Small Pinion Gear	2622	1
06	Large Pinion Gear	2621	1
07	Axle	2635	1
08	Gear Case Cover(Front)	2615	1
09	Gear Case Cover(Rear)	2616	1
10	Gear Case Collar	1077	3
11	3/8" Retaining Ring	1008	1
12	Agitator Clip	1042	1
13	Hopper Support (Black)	1002B	2
~~	Hopper Support (Gray)	1002GY	2
14	1/4" x 1-1/2" Hex Head Bolt	6129	2
15	Handle (Black)	1048B	1
~~	Handle (Gray)	1048GY	1
16	Leg Stand (Black)	1032B	1
~~	Leg Stand (Gray)	1032GY	1
17	Wheel	1916DJ	2
18	1/2" Hubcap	1040	2
19	1/4" x 2-1/2" Round Head Bolt	1049	1
20	1/4" Wing Nut	2828	7
21	1/4" Spring Nut	1051	2
22	1/4" x 1-3/4" Carriage Bolt	1408	6
23	Axle Bushing Nylon Split	1842	2
24	Control Cable Assembly	2441	1

PARTS NOT TO SCALE
PARTS MAY VARY IN COLORS AND/OR SHAPE

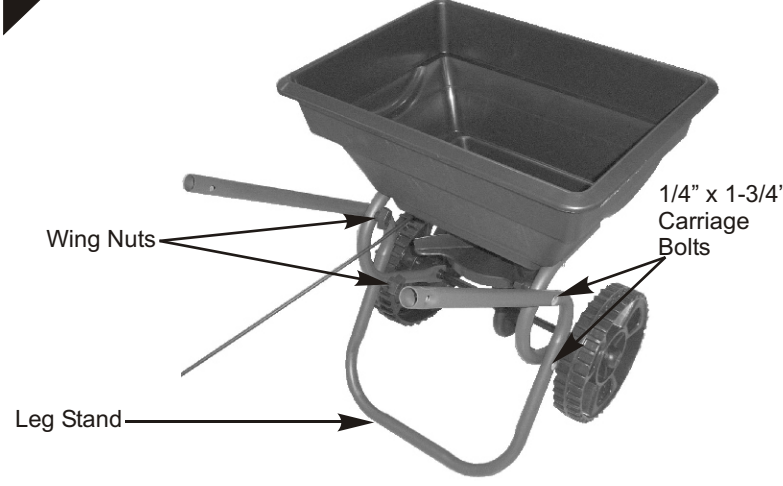


SB52 & SB52GY Assembly Instructions

ASSEMBLY TIP: Loosely tighten nuts and bolts at first. Fully tighten when the unit is completely assembled.



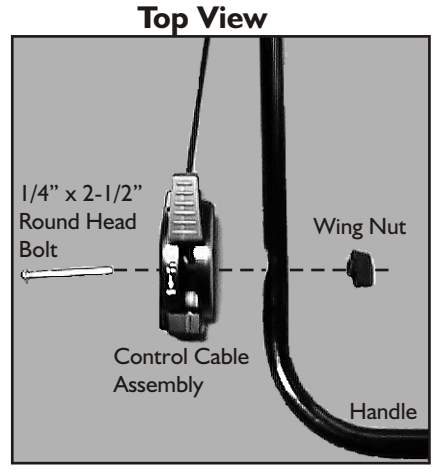
STEP 1 Attach the Leg Stand to the outside of Hopper Supports using 1/4" x 1-3/4" Carriage Bolts and Wing Nuts.



STEP 2 Attach Handle to Leg using 1/4" x 1-3/4" Carriage Bolts and Wing Nuts.



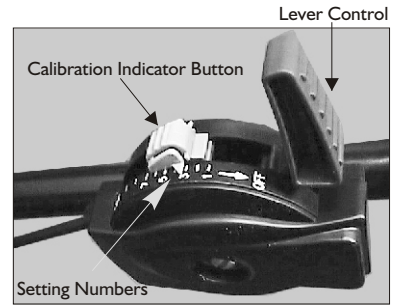
STEP 3 Attach Control Cable Assembly by passing a 2-1/2" Round Head Bolt through Cable Assembly and Handle. Secure with Wing Nut.



USING YOUR SPREADER

Settings are made by pressing down on the Calibration Indicator button and setting to desired number on the Control Cable Assembly.

- * **TO OPEN** - Push the Control Lever forward until it stops against button.
- * **TO CLOSE** - Pull the Control Lever back toward Operator.



See Application chart for setting information.

MAINTENANCE INSTRUCTIONS

AFTER EACH USE: Wash unit thoroughly let dry. Lubricate moving parts, including slide plate, axle and upright shaft.

CAUTION:

CARE MUST BE TAKEN WITH ANY WEED KILLER, PESTICIDE, OR COMBINATION PRODUCT. THEY CAN BE HARMFUL TO OTHER PLANT LIFE IN THE YARD.