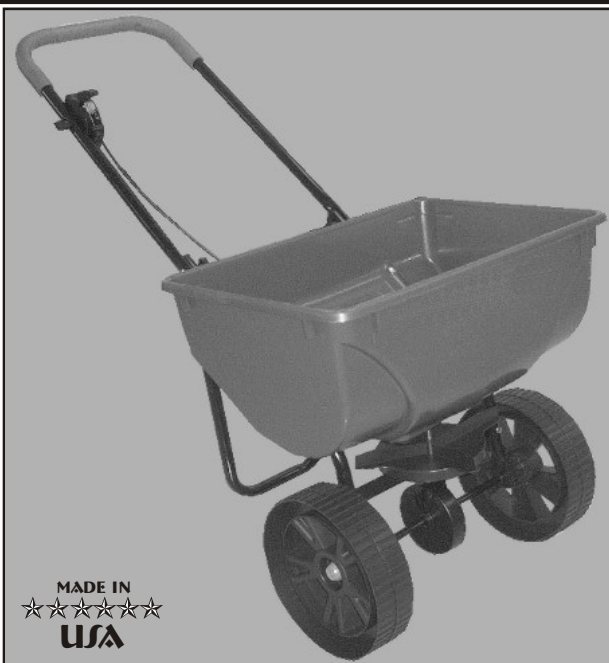




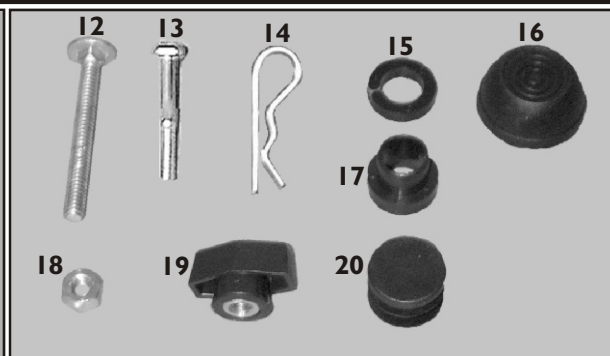
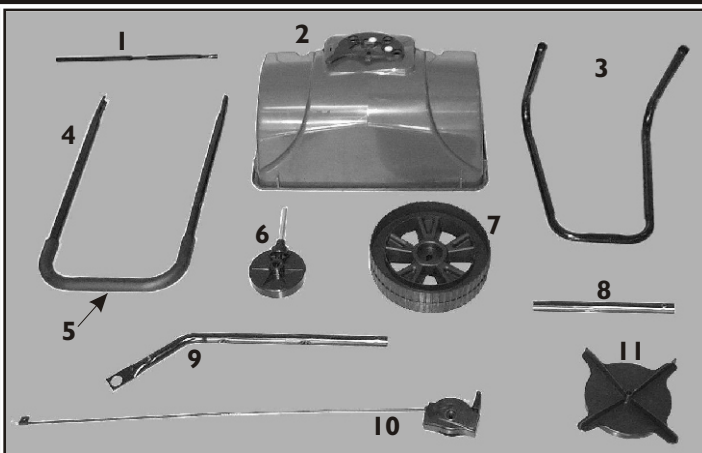
# SB4300RD & SB4300RDGY BROADCAST SPREADERS

## Parts List and Instructions

3845-I



MADE IN  
☆☆☆☆☆  
USA



### CUSTOMER SUPPORT

At Precision Products, Inc. delivering quality, value and outstanding service is our goal. However, sometimes parts do become damaged or lost during transport from our facilities to the store. **If you have any problems, please do not return this merchandise to the store. Call us and we will take care of any problem you may have with this unit.**  
**Phone (800) 225-5891 Ext. 204**

### HOW TO ORDER

#### REPLACEMENT PARTS:

When ordering parts always give model number, part number and part description.

**Send To:** Parts Division  
316 Limit Street  
Lincoln, IL 62656

**Phone (800) 225-5891**  
(217) 735-1590 Ext. 204  
**FAX (217) 735-2435**  
www.precisionprodinc.com

### LIMITED WARRANTY

This unit is warranted against defects in materials and workmanship to the original purchaser, under normal use and service, for a period of ninety (90) days from date of sale. During the Warranty Period, we will repair or replace at our option free of charge to the original purchaser, any part of the Unit that our examination shows to be defective in workmanship or materials. This Warranty **Does Not** apply to damage caused by misuse, abuse, neglect, accident, normal wear, or alterations by unauthorized persons.

**PRECISION PRODUCTS, INC.**

Retain for future reference Parts referenced with ** have two color options.							
Ref No	Parts No	Description	Qty	Ref No	Parts No	Description	Qty
1	2564B	Axle - 1/2" x 17" (Black)	1	12	1868	1/4" x 2-1/4" Carriage Bolt	7
**	2564G	Axle - 1/2" x 17" (Gray)	1	13	1660	1/4" x 1-1/4" Hex Head Bolt	2
2	2886	Hopper	1	14	2455	#203 Hitch Pin Clip	1
3	2887	Leg Stand (Black)	1	15	1060	Split Spacer	2
**	2887G	Leg Stand (Gray)	1	16	1040R	Hub Cap	2
4	2888B	Handle (Black)	1	17	1842	Split Bushing	2
**	2888GY	Handle (Gray)	1	18	1270	1/4" Hex Head Nut	6
5	2554	Handle Cover	1	19	2828	Wing Nut	3
6	2889G	Gear Case	1	20	1053	7/8" Tube Plug	2
7	2890	Wheel	2	<p><b>TIP:</b> Many of these hardware parts can be purchased at your local hard</p>			
8	2546B	Cross Brace (Black)	1				
**	2546G	Cross Brace (Gray)	1				
9	2892B	Hopper Support (Black)	2				
**	2892G	Hopper Support (Gray)	2				
10	2441	Cable Control	1				
11	2614	Spinner Disc	1				

## USING YOUR SPREADER SB4300RD & SB4300RDGY Broadcast Spreader

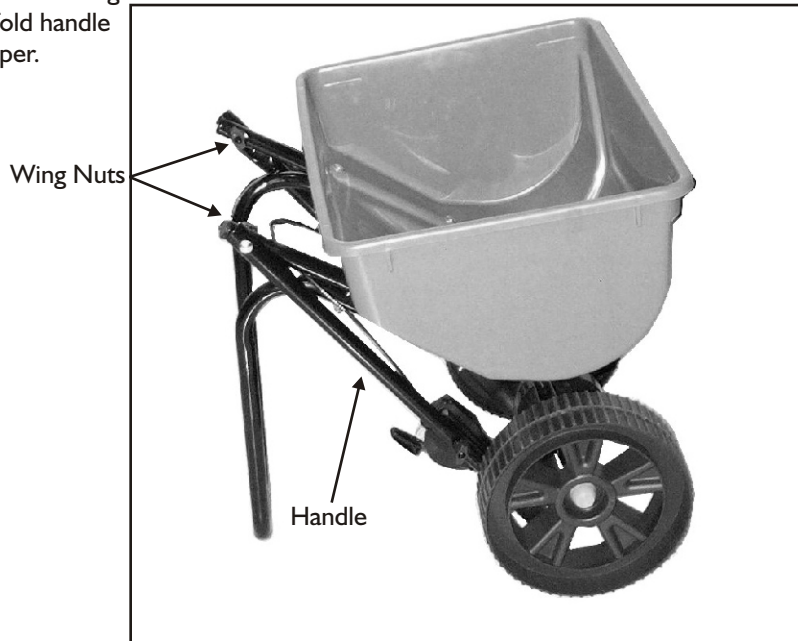
### STEP 1

Un-fold Handle and tighten Wing Nuts.



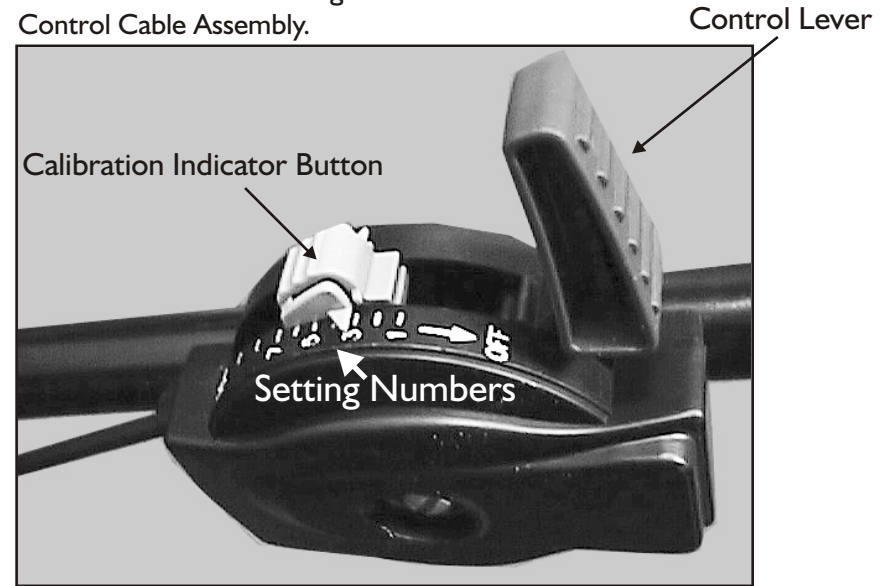
### FOR STORAGE

Loosen the two Wing Nuts and fold handle under hopper.



### USING YOUR SPREADER

Settings are made by pressing down on the Calibration Indicator button and setting to desired number on the Control Cable Assembly.



- \* **TO OPEN** - Push the Control Lever forward until it stops against button.
- \* **TO CLOSE** - Pull the Control Lever fully back toward Operator.

*See Application chart for setting information.*

### MAINTENANCE INSTRUCTIONS

**AFTER EACH USE:** Wash unit thoroughly let dry. Lubricate moving parts, including slide plate, axle and upright shaft.

### **CAUTION:**

CARE MUST BE TAKEN WITH ANY WEED KILLER, PESTICIDE, OR COMBINATION PRODUCT. THEY CAN BE HARMFUL TO OTHER PLANT LIFE IN THE YARD.