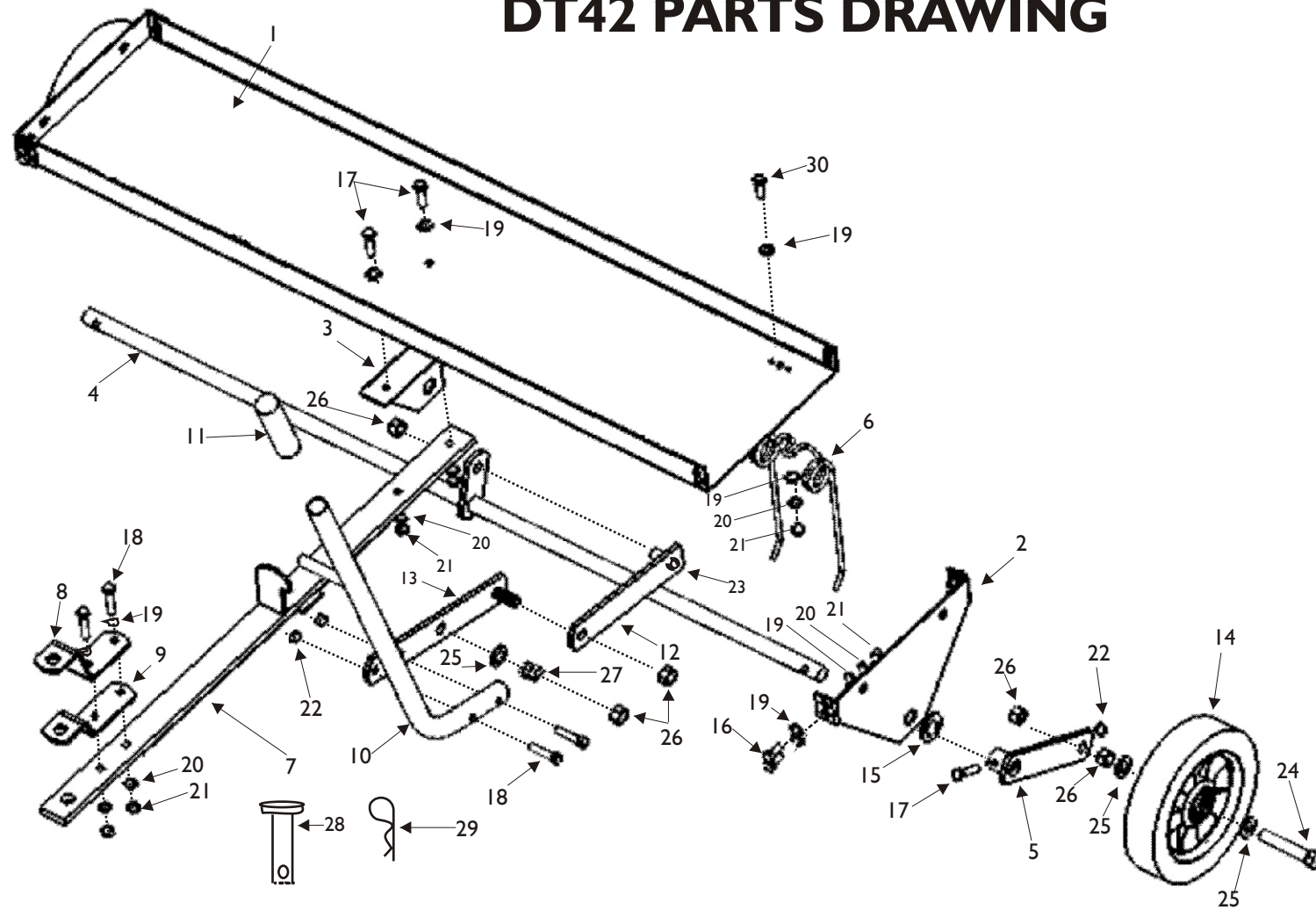
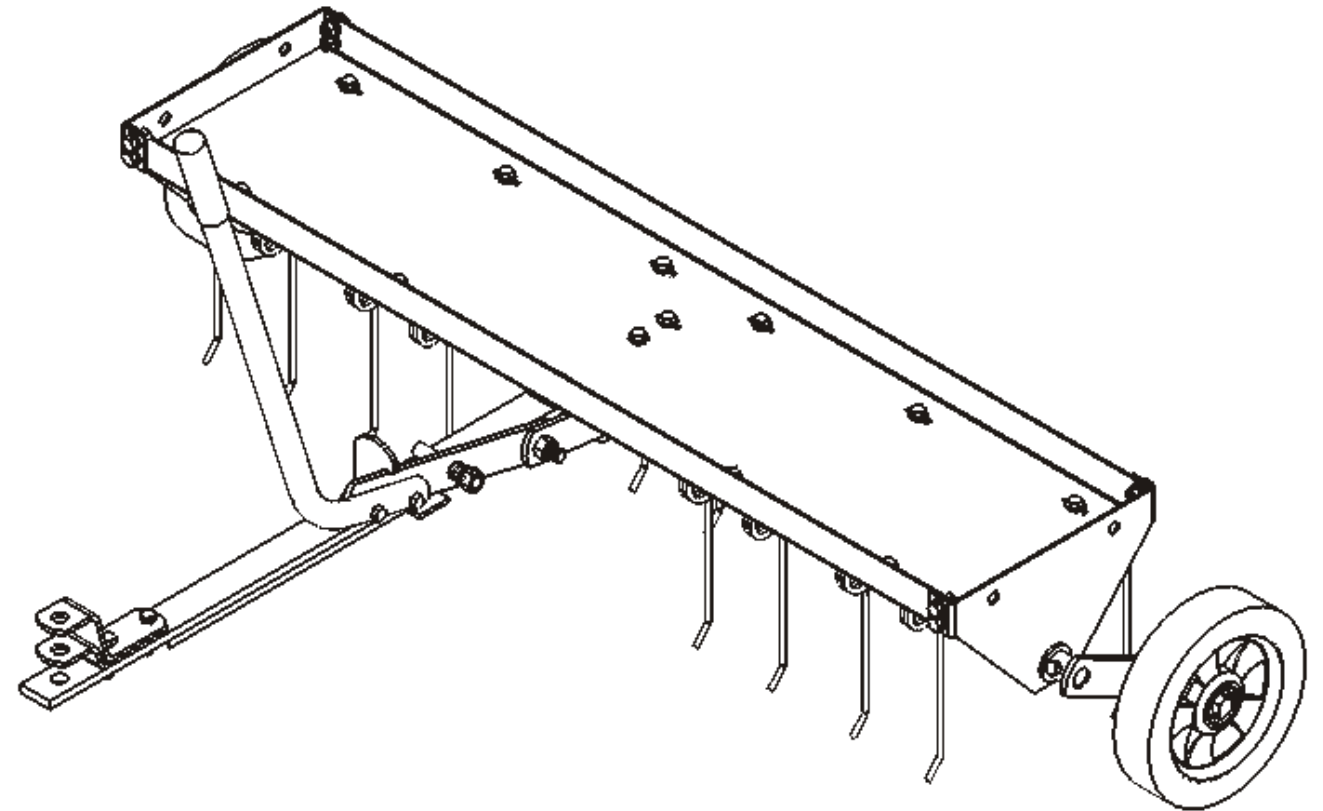


DT42 PARTS DRAWING



DT42 Assembly and Operation Manual 42 Inch Lawn Dethatcher



Ref. No.	Part Description	Part No.	Part Qty.	Ref. No.	Part Description	Part No.	Part Qty.
1	Top Plate	4250x	1	16	5/16 x 3/4" Hex Head Bolt	1248	8
2	End Plate	4251x	2	17	5/16 x 1 1/4" Hex Head Bolt	4281	4
3	Center Plate	4252x	1	18	5/16 x 1 1/2" Hex Head Bolt	4014	4
4	Axle Assembly	4255	1	19	5/16 Flat Washer	1044	42
5	Wheel Bracket	4269	2	20	5/16 Lockwasher	1276	23
6	Tine (2 Prong)	4005	11	21	5/16 Hex Head Nut	1275	23
7	Tow Bar	4286B	1	22	5/16 Reverse Lock Nut	1557	4
8	Clevis #1	4265	1	23	1/2-13 x 1 1/4" Std Hex Head Bolt	4278	1
9	Clevis #2	4266	1	24	1/2-13 x 3" Std Hex Head Bolt	4271	2
10	Handle	4262	1	25	1/2 Flat Washer	1506	5
11	Handle Grip	3042	1	26	1/2-13 Reverse Lock Nut	1638	7
12	Linkage Bar	4264B	1	27	Compression Spring	4272	1
13	Lever Link	4263B	1	28	1/2 x 3 1/2" Clevis Pin	4289	1
14	Wheel 8" Brick Tread	4013	2	29	#14 Hitch Pin Clip	1042	1
15	3/4 Flat Washer	1264	3	30	5/16" x 1" Hex Head Bolt	3738	11

GUARANTEE

The merchandise you have purchased from us has been carefully engineered and manufactured under PRECISION PRODUCTS rigid quality standards and should give you satisfactory, dependable operation. However, like all mechanical merchandise, it may occasionally require adjustment or maintenance.

WARNING:

Before using this product, read this Manual and follow all Operating Instructions and Safety Guidelines.

Precision Products, Inc.

DT42

Thank you for purchasing a Precision Products Dethatcher.

Please read the Operating Instructions and take note of the Safety Guidelines before using the dethatcher

SAFETY GUIDELINES

1. Your dethatcher was designed for use with riders and lawn/garden tractors.
2. Do not stand or ride on the dethatcher.
3. Never allow children to operate the tractor or the dethatching equipment.
4. The dethatcher has sharp tines. Always handle with care during actual dethatching use. Tines should be shielded when stored.
5. To avoid jack knifing, back straight. Jack knifing could result in damage to your equipment.
6. Repairs, adjustments, and service to your dethatcher should be done only when the dethatcher is disconnected from the rider or lawn/garden tractor.
7. Never exceed the recommended operating speed range of 3 to 5 MPH to avoid personal and/or equipment damage.

ASSEMBLY

You will need two 1/2" wrenches and two 3/4" wrenches for assembly. Your dethatcher has been partially pre-assembled in our factory for your convenience. First, remove all items from the box. Your carton should contain the following pieces:

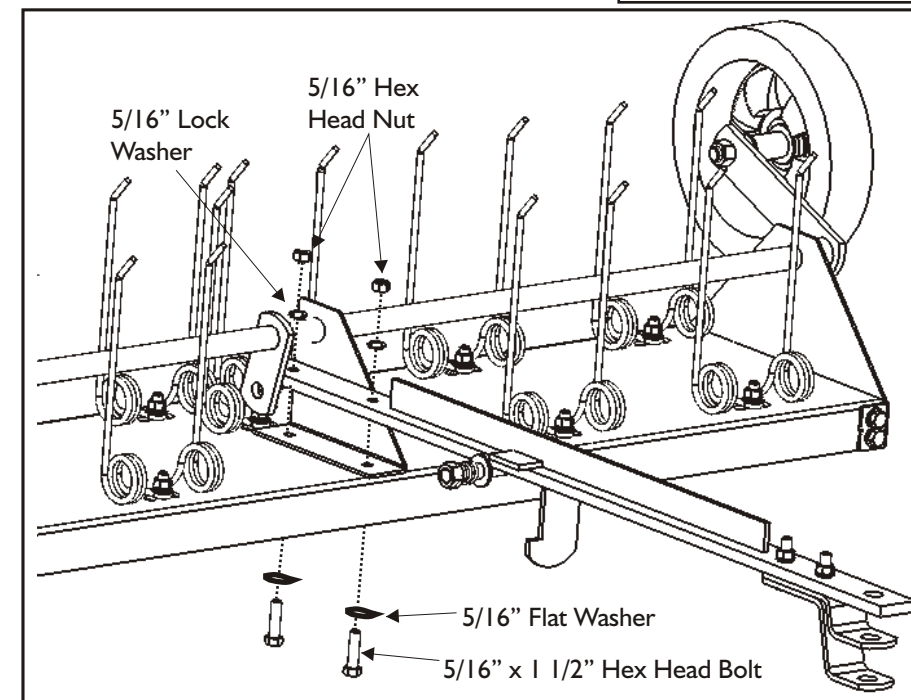
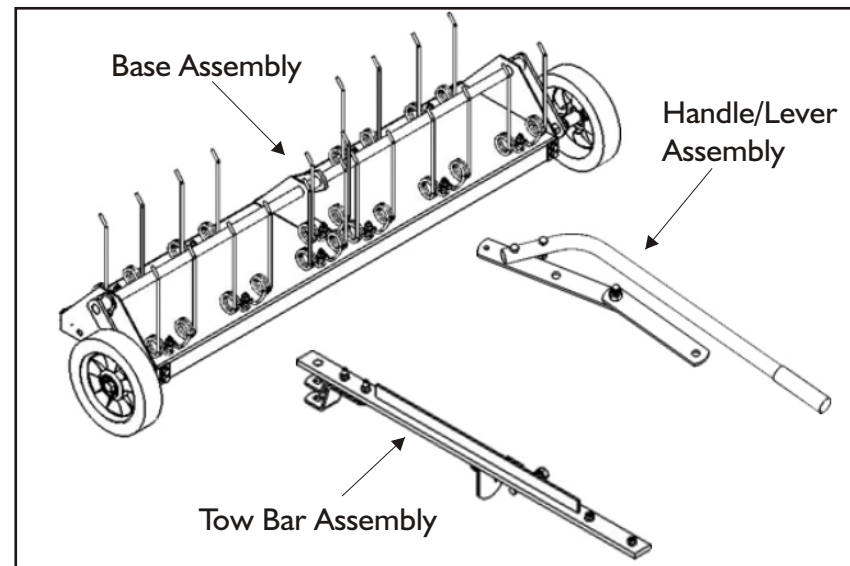


Fig. 1. Remove the 5/16" Hex Head Nuts and 5/16" Lock Washers from the Center Plate. Slide the Tow Bar Assembly onto the bolts and then fasten with the Lock Washers and Hex Head Nuts.

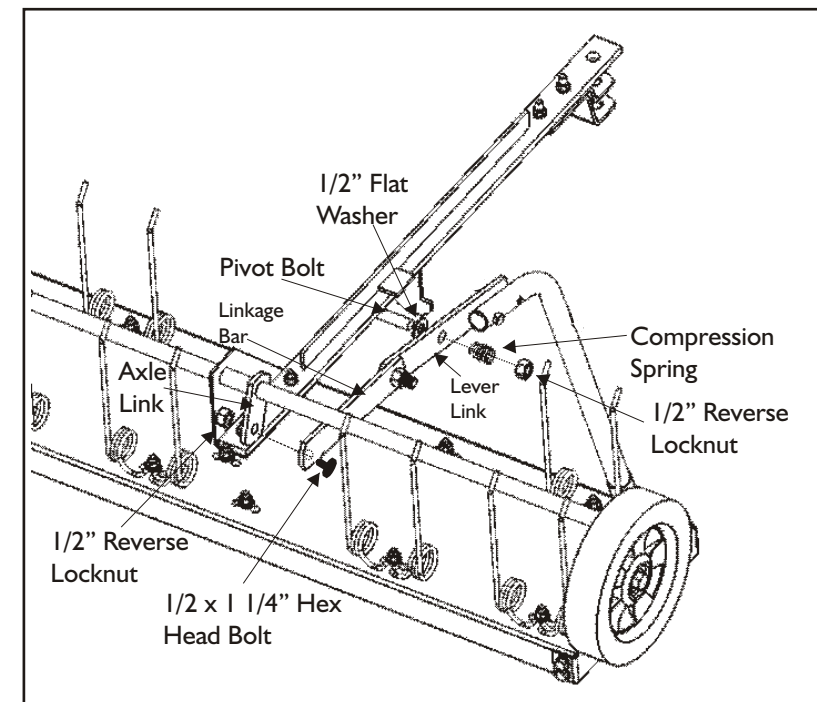


Fig. 2. Remove 1/2" Reverse Lock Nut and Compression Spring from Pivot Bolt (leave on the 1/2" Flat Washer). Slide the Lever Link onto the Pivot Bolt. Then put back on Compression Spring and Reverse Lock Nut.

Remove 1/2" Reverse Lock Nut from the 1/2" x 1 1/4" Hex Head Bolt in the end of the Linkage Bar. Attach Linkage Bar to Axle Link and then secure with the Reverse Lock Nut.

Tighten all bolts, making sure linkages are able to move freely.

FOR MOUNTING AND OPERATION

A thatch is a layer of stems, clippings, runners, roots and leaves that have not decayed. Regular removal of thatches is critical to the maintenance of a healthy lawn. With proper use, your dethatcher will effectively dislodge excessive thatch from your lawn. Excessive thatch prevents air, water and fertilizer from reaching the roots.

Your dethatcher should be attached to your rider or tractor on a level surface such as a driveway or garage floor with wheels fully engaged.

You are now ready to begin dethatching. Upon entry onto a grassy surface, adjust the wheels off the ground using the handle.

MAINTENANCE

Your new dethatcher is precision made, utilizing the finest tools and materials. Although it is ruggedly constructed, do not subject it to misuse. Always check the nuts and bolts to insure that they are tightened. We suggest that you apply a light coat of oil to the metal to prevent rust on the tines or any exposed metal. Always store your dethatcher in a dry area.

PLEASE DO NOT RETURN THIS MERCHANDISE TO THE STORE. CALL US AND WE WILL TAKE CARE OF ANY PROBLEMS YOU MIGHT HAVE WITH THIS PRODUCT. Phone (800) 225-5891 EXT.#204

When ordering parts, always give model number, part description, & part number.

Send To: Precision Products, Inc.
Parts Division
316 Limit Street
Lincoln, IL 62656

Phone (217)735-1590
Fax (217)735-2435

LIMITED WARRANTY

This unit is warranted against defects in materials and workmanship to the original purchaser, under normal use and service, for a period of ninety (90) days from date of sale. During the Warranty Period, we will repair or replace at our option free of charge to the original purchaser, any part of the Unit that our examination shows to be defective in workmanship or materials. This Warranty **Does Not** apply to damage caused by misuse, abuse, neglect, normal wear, or alterations by unauthorized persons.